



Sustainable Groundwater Management Act

Projects and Management Actions

The Sustainable Groundwater Management Act (SGMA) was signed into law by Governor Jerry Brown in 2014 to regulate groundwater pumping. It is designed to protect California's groundwater resources and, once fully implemented, will fundamentally change the way Californians use and manage groundwater in the state. In practice, the amount of groundwater available to pump will be capped in an effort to prevent undesirable results in California's aquifers.

SGMA requires local agencies to form Groundwater Sustainability Agencies (GSAs), and Westlands Water District serves as the GSA for the Westside Subbasin. The GSA is responsible for developing a Groundwater Sustainability Plan (GSP) and Projects and Management Actions to achieve sustainability by 2040.

Projects and Management Actions

Projects and Management Actions were developed to achieve sustainability goals, measurable objectives, and avoid undesirable results in the Westside Subbasin. They include:

#1 Surface Water Imports

Surface water imports will provide the majority of agricultural, municipal and industrial water supply and reduce the reliance on groundwater within the Westside Subbasin. Westlands Water District will continue to secure surface water supplies, which include Central Valley Project deliveries.

#2 Groundwater Allocation

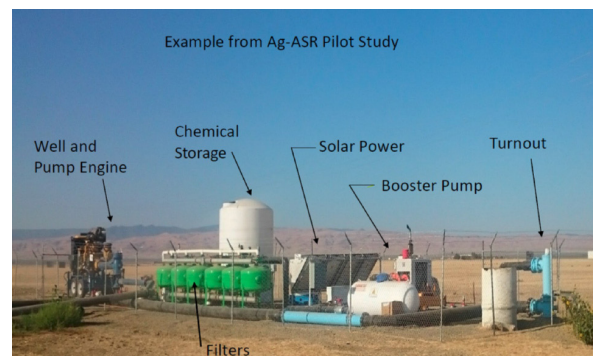
The Groundwater Allocation equitably distributes the Westside Subbasin's Sustainable Yield based on the gross acres in the Westside Subbasin. Beginning on March 1, 2023, the District will allocate groundwater for each acre of land within the Subbasin boundary. The Groundwater Allocation Program will begin with a Transition Period starting with a uniform annual Groundwater Allocation of 1.3 AF per gross acre in 2023 and then reduced each year by 0.1 AF per Gross Acre until 2030 (Table 1). A landowner's groundwater allocation may be augmented through various activities that promote groundwater recharge in the Westside Subbasin.

TABLE 1

Water Year	Allocation Cap AF per acre
2023	1.3
2024	1.2
2025	1.1
2026	1.0
2017	0.9
2028	0.8
2029	0.7
2030	0.6

#3 Aquifer Storage and Recovery

The Agricultural Aquifer Storage and Recovery (ASR) program refers to the direct injection and storage of imported water supplies into new and retrofitted production wells. Injection and storage of surface water supplies is one of the groundwater recharge options described in No. 2. The ASR Program is anticipated to occur when there is surplus surface water for injection. In 2023, there were 46 active ASR wells with a monthly storage capacity of 500 AF. Additionally, by January 2024 the District will complete construction on 8 ASR wells to improve groundwater conditions.



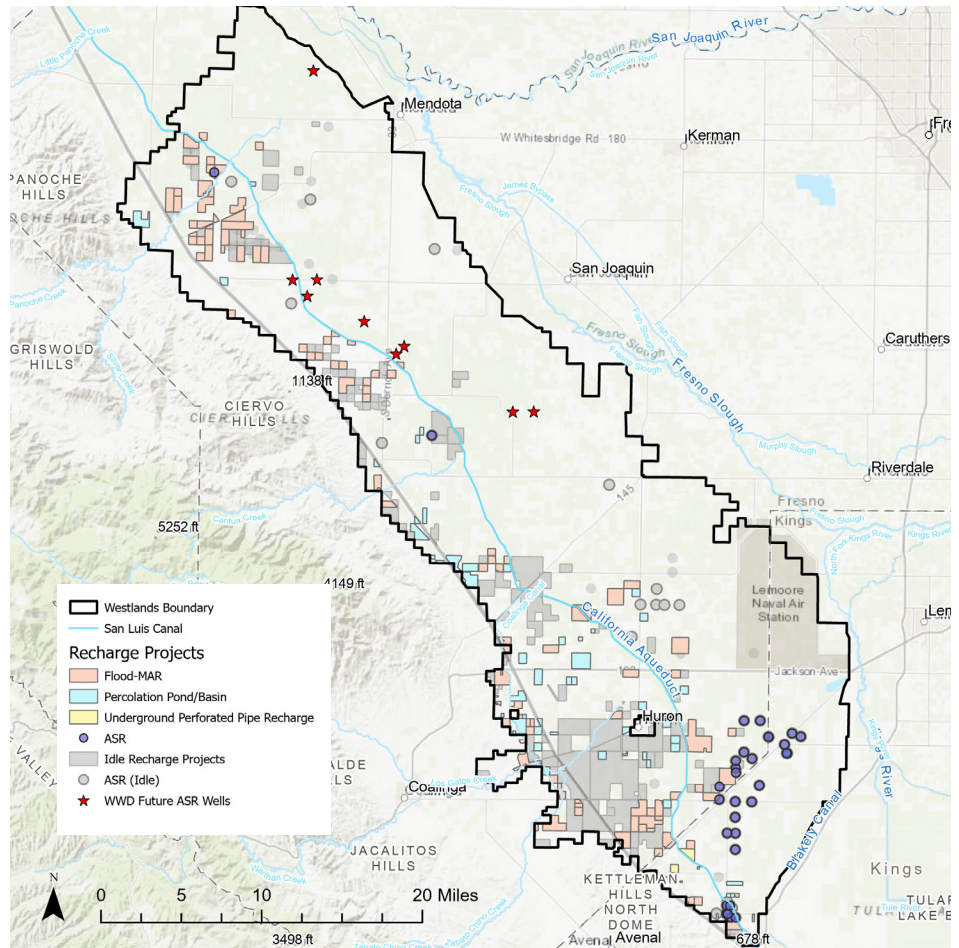
#4 Targeted Pumping Reductions

Land subsidence near Checks 16, 17 and 20 of the San Luis Canal/California Aqueduct during the 2013-2016 drought highlighted the need to manage groundwater pumping in the Lower Aquifer to avoid undesirable results. The Subsidence-Prone Areas near Checks 16 and 17 were revised based on the InSAR data collected between January 2016 and January 2021. The GSA will provide landowners with incentives to reduce pumping in the Lower Aquifer in accordance with Article 1. The goal is to limit the subsidence rates and prevent declines in groundwater levels near the San Luis Canal.

#5 Percolation

Percolation basins promote surface water infiltration into the aquifer through permeable surficial deposits to recharge the groundwater subbasin. The District will construct six percolation basin projects on District owned land in the Subbasin. Two of the projects are located along the western edge of the Subbasin where the Corcoran Clay is absent and the District is in the process of acquiring additional lands.

In addition, the District has partnered with landowners to recharge the aquifer and enhance groundwater conditions within the Subbasin. Over 20,000 acres have been permitted for recharge projects.



LEARN MORE ABOUT WESTLANDS GSA

Water users, neighboring water agencies and GSAs, community members, and other interested parties are welcomed and encouraged to share their comments, questions, and suggestions either at a meeting or workshop or by emailing sgma@wwd.ca.gov. For more information on SGMA and the groundwater recharge activities please visit: <https://wwd.ca.gov/SGMA>.

Westlands Water District Office

3130 N. Fresno Street, P.O. Box 6056, Fresno, CA 93703-6056

Phone: 559-224-1523

pubaffairs@wwd.ca.gov

wwd.ca.gov

[f](#) [t](#) [@](#) [in](#) [v](#) [d](#) @Westlands_Water